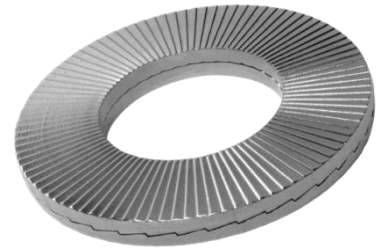
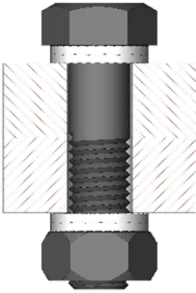
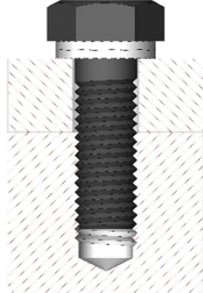
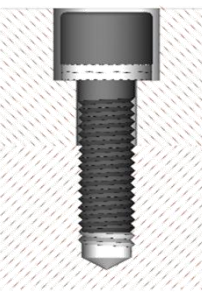
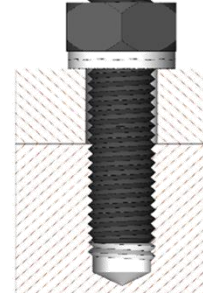



## RONDELLES AUTOBLOQUANTES HEICO-LOCK® INOX ÉTROITES HLS\_S

- Acier Inox A4 EN144.04 (316L)
- Dureté superficielle > 520 HV0.05
- Tenue en corrosion 1200 HBS / ISO9227

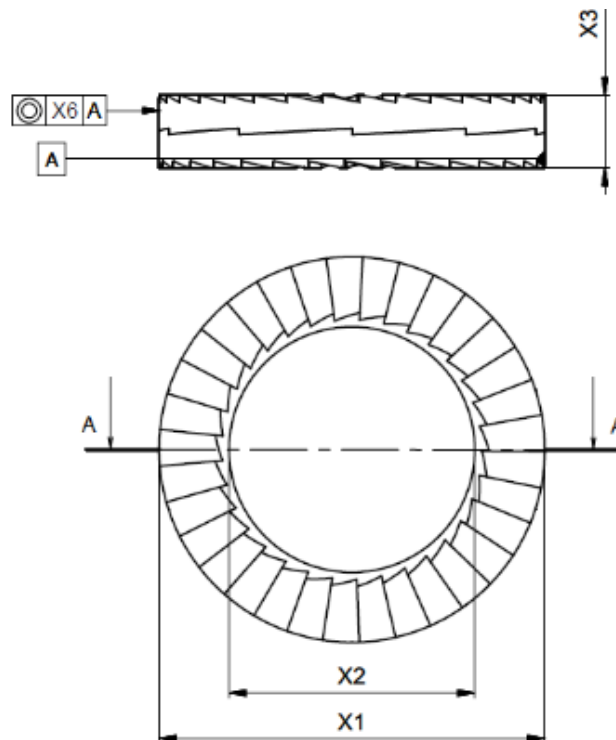


### MONTAGE

				
Montage boulon : HEICO-LOCK® <u>de chaque côté</u> sécurisent les deux composants	HEICO-LOCK® sécurise une vis H	HEICO-LOCK® HLS dans le la- mage sécurise une vis CHC	HEICO-LOCK® sé- curise l'écrou vissé sur un goujon	Ne jamais intercaler de rondelle plate sous la rondelle HEICO-LOCK®

Les rondelles autobloquantes HEICO-LOCK® sont livrées pré-assemblées par paires correctement orientées, maintenues avec plusieurs points de colle assurant le montage correct.

Les paires assemblées sont symétriques, il n'y a pas de sens de montage à respecter.





## RONDELLES AUTOBLOQUANTES HEICO-LOCK® INOX ÉTROITES HLS\_S

**Rondelles autobloquantes HEICO-LOCK®**

ISO

**Inox A4 316L**

Version étroite

modèles CAO 3D / 3D CAD files [www.heico-lock.com](http://www.heico-lock.com)

	Désignation HEICO-LOCK®		Øint.	Øext.	épaisseur	boitage	poids
			X2 (mm) ±0,20	X1 (mm) ±0,30	X3 (mm) ±0,25	(paires)	(kg / 100)
<b>HLS-3 S</b>	HEICO-LOCK® standard stainless steel M3	3	3,4	7,0	1,6	200	0,036
<b>HLS-4 S</b>	HEICO-LOCK® standard stainless steel M4	4	4,4	7,6	1,6	200	0,034
<b>HLS-5 S</b>	HEICO-LOCK® standard stainless steel M5	5	5,4	9,0	1,6	200	0,048
<b>HLS-6 S</b>	HEICO-LOCK® standard stainless steel M6	6	6,5	10,8	1,6	200	0,072
<b>HLS-8 S</b>	HEICO-LOCK® standard stainless steel M8	8	8,7	13,5	2,6	200	0,154
<b>HLS-10 S</b>	HEICO-LOCK® standard stainless steel M10	10	10,7	16,6	2,6	200	0,238
<b>HLS-11 S</b>	HEICO-LOCK® standard stainless steel M11	11	11,4	18,5	2,6	200	0,320
<b>HLS-12 S</b>	HEICO-LOCK® standard stainless steel M12	12	13,0	19,5	2,6	200	0,320
<b>HLS-14 S</b>	HEICO-LOCK® standard stainless steel M14	14	15,2	23,0	3,6	100	0,612
<b>HLS-16 S</b>	HEICO-LOCK® standard stainless steel M16	16	17,0	25,4	3,6	100	0,742
<b>HLS-18 S</b>	HEICO-LOCK® standard stainless steel M18	18	19,5	29,0	3,6	100	0,966
<b>HLS-20 S</b>	HEICO-LOCK® standard stainless steel M20	20	21,4	30,7	3,6	100	1,028
<b>HLS-22 S</b>	HEICO-LOCK® standard stainless steel M22	22	23,4	34,5	3,6	100	1,382
<b>HLS-24 S</b>	HEICO-LOCK® standard stainless steel M24	24	25,3	39,0	3,6	100	1,742
<b>HLS-27 S</b>	HEICO-LOCK® standard stainless steel M27	27	28,4	42,0	5,3	50	3,069
<b>HLS-30 S</b>	HEICO-LOCK® standard stainless steel M30	30	31,4	47,0	5,6	50	4,128
<b>HLS-33 S</b>	HEICO-LOCK® standard stainless steel M33	33	34,4	48,5	5,6	25	3,858
<b>HLS-36 S</b>	HEICO-LOCK® standard stainless steel M36	36	37,4	55,0	6,1	25	5,888
<b>HLS-39 S</b>	HEICO-LOCK® standard stainless steel M39	39	40,4	58,5	6,0	25	6,518
<b>HLS-42 S</b>	HEICO-LOCK® standard stainless steel M42	42	43,2	63,0	6,2	25	7,776
<b>HLS-45 S</b>	HEICO-LOCK® standard stainless steel M45	45	46,2	70,0	6,6	25	10,684
<b>HLS-48 S</b>	HEICO-LOCK® standard stainless steel M48	48	49,6	75,0	6,6	25	12,317
<b>HLS-52 S</b>	HEICO-LOCK® standard stainless steel M52	52	53,6	80,0	6,6	1	13,789
<b>HLS-56 S</b>	HEICO-LOCK® standard stainless steel M56	56	59,1	85,0	6,6	1	14,581
<b>HLS-60 S</b>	HEICO-LOCK® standard stainless steel M60	60	63,1	90,0	6,6	1	16,156
<b>HLS-64 S</b>	HEICO-LOCK® standard stainless steel M64	64	67,1	95,0	6,6	1	17,809
<b>HLS-68 S</b>	HEICO-LOCK® standard stainless steel M68	68	71,1	100,0	9,5	1	27,913
<b>HLS-72 S</b>	HEICO-LOCK® standard stainless steel M72	72	75,1	105,0	9,5	1	30,496
<b>HLS-76 S</b>	HEICO-LOCK® standard stainless steel M76	76	79,1	110,0	9,5	1	33,190